

# THE GME REPORT

A Newsletter for the Icahn School of  
Medicine at Mount Sinai **Graduate Medical  
Education** Community

## Engagement and Innovation



**I. Michael Leitman, MD, FACS**  
Dean for Graduate Medical Education

Welcome to the first edition of **The GME Report**, a periodic newsletter intended to keep our GME community informed about the numerous activities across the Icahn School of Medicine at Mount Sinai. In this first edition we welcome the GME programs from the newest member of the Mount Sinai Health System, **Mount Sinai South Nassau**, who came under ISMMS sponsorship in July 2019 and offer thanks to **Dr. Scott Barnett** who left GME this Fall.

You will also have an opportunity to learn about some of the innovative and exciting work our ISMMS programs are engaged in as part of the **ACGME's Back to Bedside** initiative and receive an update from our **ACGME's Pathway Leaders Health Care Disparities Collaborative**. We are excited to recognize a resident led initiative that is being recognized by the ACGME with the prestigious **David C. Leach Award**. The Fall also saw the appointment of a new cohort of **GME Well-Being Champions**. You will also learn more about our **GME Leadership Development Program** and a number of residents and fellows who will be participating in the **Harvard Macy Program for Post-Graduate Education**.

Lastly, October saw a large number of program directors, faculty and program coordinators participate in our **annual educational conferences**, where they were given the opportunity to develop the skills necessary to provide effective oversight of our training programs and the highest quality teaching and education.

## HIGHLIGHTS OF THIS NEWSLETTER

- Welcome Mount Sinai South Nassau
- Acknowledging Scott H. Barnett, MD
- New Program Directors
- ACGME Back to Bedside
- ACGME David C. Leach Award
- ACGME Pathways Leaders Collaborative Update
- GME Leadership Development Program
- Harvard Macy Program for Post-Graduate Trainees
- GME Well-Being Champions.
- Faculty, Program Director and Program Coordinator Development

## WELCOME MOUNT SINAI SOUTH NASSAU



The start of the 2019-20 Academic Year saw the following residency programs at **Mount Sinai South Nassau** (MSSN) come under the sponsorship of ISMMS:

- **Family Medicine**
- **Internal Medicine**
- **Obstetrics and Gynecology**
- **Podiatric Medicine and Surgery**
- **Surgery**
- **Transitional Year**

Please join GME in welcoming the residents, program directors, program coordinators, and faculty at MSSN to the ISMMS GME community.

## ACKNOWLEDGING SCOTT H. BARNETT, MD



At the end of September **Scott, H. Barnett, MD**, Associate Dean for Graduate Medical Education, Mount Sinai Hospital transitioned out of his role within the Office of Graduate Medical Education and is continuing to work in a part-time role in the Department of Pediatrics. Recruitment is underway for Dr. Barnett's replacement which we anticipate will be announced before the end of 2019.

A graduate of NYU School of Medicine and the Pediatrics Residency and Genetics Fellowship at The Mount Sinai Hospital, Dr. Barnett began his role as Associate Dean for Graduate Medical Education in 2006, and served as Designated Institutional Official from 2008-2014; he had previously served as Program Director in Pediatrics at The Mount Sinai Hospital (1991-2002) and Associate Dean for Admissions for ISMMS. For his unwavering commitment to the educational mission of Mount Sinai Dr. Barnett has been awarded the The Mount Sinai Alumni Award for Achievement in Medical Education (2011) and the Dr. Arthur H. Aufses, Jr Career Achievement Award in Medical Education (2016). With more than 25 years of experience as a GME leader Dr. Barnett has been an invaluable source of support and mentorship to a large number of chairs, program directors, program coordinators, faculty, residents/fellows, and students.

Please join GME in recognizing and thanking Dr. Barnett for all he that has done to support the mission of Mount Sinai GME and ensuring the highest quality education for our trainees.



Offering thanks for a commitment to  
Mount Sinai and GME

## NEW PROGRAM DIRECTORS

Please join GME in welcoming the following program directors that were appointed in the past 6 months to lead ISMMS sponsored training programs or are leading a newly accredited training program..



**Edgar Argulian, MD, MPH**  
Mount Sinai St. Luke's and West  
Cardiovascular Disease



**Martin Chen, MD**  
Mount Sinai Hospital  
Critical Care Medicine (Anesthesiology)



**Michelle Fabian, MD**  
Mount Sinai Hospital  
Neurology



**Douglas Fredrick, MD**  
Mount Sinai Hospital  
Ophthalmology



**Somali Gavane, MD**  
Mount Sinai Hospital  
Nuclear Medicine



**Anne Hardart, MD**  
Mount Sinai Hospital  
Female Pelvic Medicine and  
Reconstructive Surgery



**Joseph Herrera, MD**  
Mount Sinai Hospital  
Sports Medicine



**Tania Lopez Pichardo, MD**  
NYC Health+Hospitals Elmhurst  
Pediatrics



**Kimihiko Oishi, MD**  
Mount Sinai Hospital  
Medical Genetics



**Elaine Rabin, MD**  
Mount Sinai Hospital  
Emergency Medicine



**Harsha Reddy, MD**  
New York Eye and Ear Infirmary of Mount Sinai  
Ophthalmology



**Jessica Reid-Adam, MD**  
Mount Sinai Hospital  
Pediatrics



**Joyce Robert, MD**  
Mount Sinai South Nassau  
Transitional Year



**Anuradha Singh, MD**  
Mount Sinai Hospital  
Neurophysiology



**Joseph Truglio, MD**  
Mount Sinai Hospital  
Internal Medicine-Pediatrics (**New Program 2019-20**)



**Alfin Vicencio, MD**  
Mount Sinai Hospital  
Pediatric Pulmonology (**New Program 2019-20**)

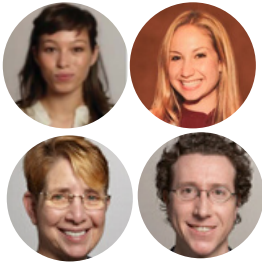


The recent New Program Director Workshop at the ISMMS GME Educational Conference



## ACGME DAVID C. LEACH AWARD

The ACGME annually recognizes notable institutions and program personnel for their outstanding work and contributions to graduate medical education through their **Awards Program**. This year a team from Mount Sinai Hospital Psychiatry was awarded the prestigious **David C. Leach Award**, which recognizes residents and fellows who have fostered innovation and improvement in their residency programs, advanced humanism in medicine and increased efficiency and emphasis on educational outcomes. Please join GME in congratulating Dr. Hart and the other team members below for this prestigious honor which will be awarded at the ACGME Annual Education Conference in San Diego in late February 2020,



Team Lead: **Anne Hart, MD, PGY3, Mount Sinai Hospital Psychiatry**

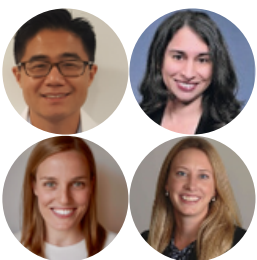
Team Members: **Jordyn Feingold, MAPP, Medical Student, ISMMS; Deborah Marin, MD, Faculty, Mount Sinai Hospital Psychiatry; Asher Simon, MD, Associate Program Director, Mount Sinai Hospital Psychiatry**

**Initiative:** The **PEERS Program** is a trainee-led, longitudinal curriculum aimed at cultivating well-being, resilience and community among medical trainees at the Icahn School of Medicine at Mount Sinai. The program is comprised of structured support groups incorporating discussion, mindfulness exercises, and evidence-based techniques from positive psychology. Over the course of ten modules, the curriculum targets common challenges at each stage of medical education to equip trainees with the relevant skills to face challenges and thrive throughout training.

## ACGME BACK TO BEDSIDE

Two ISMMS training programs had projects selected to participate in the 2019-2021 cohort of the ACGME's innovative **Back to Bedside** initiative, a resident-led initiative to empower medical residents and fellows to create innovative strategies for increasing time with patients, improving physician and patient well-being. The projects below were among 33 from across the country that were selected for grant funding from over 200 applications.

In August the two teams traveled to ACGME headquarters in Chicago for the first of a series of collaborative learning sessions with the other teams from across the country.



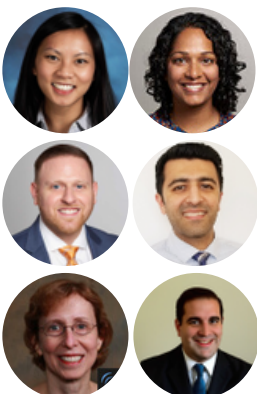
**"Follow-up Cards": Returning to the Virtual Bedside**

Mount Sinai Hospital Emergency Medicine

Team Lead: **Paul Peng, MD, PHD, PGY4**

Team Members: **Elaine Rabin, MD, Program Director (Faculty Mentor); Cailey Simmons, MD, PGY3; Melissa Villars, MD, MPH, PGY2**

**Project Aims:** EM residents would derive a greater degree of personal accomplishment and meaning in their work if they could simply know how their care has impacted patients. Residents will be provided with a "follow-up card" with a personalized QR code associated with a Google Voice number and if inclined to follow-up on a patient, the card allows a personalized means to receive a voluntary update via an aliased medium (i.e. Google Voice) without revealing contact information.



**Engaging Physician Trainees through Bedside ICU Narratives**

Mount Sinai St. Luke's and West Pulmonary Disease and Critical Care Medicine

Team Lead: **Christine Nguyen, MD, PGY6**

Team Members: **Mirna Mohanraj, MD, Associate Program Director (Faculty Mentor); Alexander Davidovich, DO, MS, PGY5; Deep Patadia, MD, MPH, PGY5; Janet Shapiro, MD (Faculty Mentor); Jonathan Stoeber, MD, PGY5**

**Project Aims:** 1. Institute standardized narrative medicine practice to elicit and share biographic and social background information for non-communicative, critically ill patients; 2. Humanize the ICU and foster meaning in the physician trainee learning environment; 3. Assess pre- and post-intervention empathy in ICU physicians

## ACGME PATHWAY LEADERS COLLABORATIVE UPDATE



**Brijen Shan MD**  
Associate Dean for Quality and Patient Safety  
in Graduate Medical Education



**Aaron Patterson, MD, MBA, MA**  
Associate Chief Information Officer  
Mount Sinai Downtown

ISMMS was one of nine Sponsoring Institutions nationwide to be selected in late 2018 to participate in the **ACGME's Pathway Leaders Health Care Disparities Collaborative** as part of the **ACGME's Pursuing Excellence in the Clinical Learning Environments Initiative**. The selected project is "Use of granular race and ethnicity data (RED) and sexual orientation and gender identity (SOGI) data to assess ambulatory learning environment's disparities in process and outcomes of health care" and the initial work is focused on Internal Medical Associates (IMA) uptown and General Medicine Associates (GMA) downtown.

The collaborative team, whose membership includes GME and Hospital leadership, residents/fellows, faculty, health informaticists, and nurses, will have representatives traveling to Chicago in late November for a third and final collaborative learning session at ACGME headquarters and will then be presenting their work at the ACGME Annual Educational Conference in San Diego in late February 2020.

The collaborative has developed three work groups-- an education work group to develop learning tools; a data/informatics workgroup to assist in developing reports with disparities indicators; and two site working groups to pilot projects in the outpatient setting. To date, the group has completed environmental, learner and faculty assessments of the learning environment and are now developing interventions to address an aspect of disparities in their practices. The group will develop a strategic plan for addressing healthcare disparities in the GME learning environment by the end of 2019.

### Resident/Fellow Team Members Traveling to ACGME Collaborative Learning Sessions



**Justin Gasper, MD**  
Mount Sinai Beth Israel Internal Medicine



**Rui Jiang, MD**  
Mount Sinai Hospital Preventive Medicine



**Emily Hertzberg, MD**  
Mount Sinai Hospital Pediatric Hospital Medicine



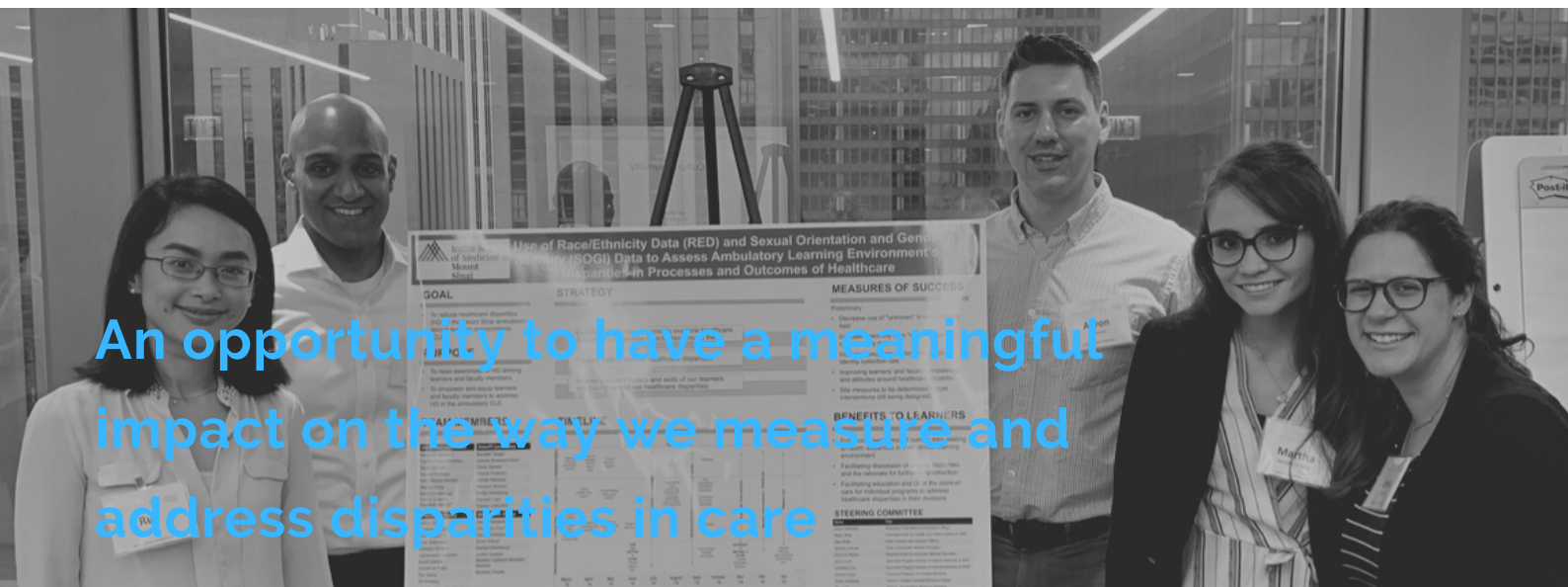
**Martha Catalina Morales Alvarez, MD**  
Mount Sinai Beth Israel Internal Medicine



**Scott Jelinek, MD, MPH, MA**  
Mount Sinai Hospital Pediatrics



**Nicole Ramsey, MD, PHD**  
Mount Sinai Hospital Allergy and Immunology



An opportunity to have a meaningful impact on the way we measure and address disparities in care

## GME LEADERSHIP DEVELOPMENT PROGRAM

In an effort to identify and train future physician leaders, in January 2019 a first cohort of over 35 residents and fellows from across the Mount Sinai Health System began training in the **GME Leadership Development Program**, which GME developed in collaboration with the Icahn School of Medicine at Mount Sinai's **Graduate School of Biomedical Sciences**. The program provides residents and fellows with skills and tools to work more effectively in a variety of team settings and to increase self-awareness of leadership styles and impact. Master's level training includes interviews, presentations, and discussions with a number of key physician leaders, among them senior executives of the Mount Sinai Health System, leading clinical faculty, and external/national experts. A second cohort of residents and fellows started in the program in August 2019, bringing the total number of participants to over 70.

Information about the next application cycle will be forthcoming later in the academic year.

## HARVARD MACY PROGRAM FOR POST-GRADUATE TRAINEES

27 Mount Sinai Health System house-staff were accepted to the 2019 **Program for Post-Graduate Trainees: Future Academic Clinician-Educators** co-sponsored by the Harvard Macy Institute, Boston Children's Hospital and the Icahn School of Medicine at Mount Sinai.

The course will take place December 7-9, 2019 at the Massachusetts General Hospital Institute of Health Professions, and the 3-day program is built around two major themes: skills in teaching, and scholarship in medical education. Please join GME in thanking the ISMMS **Institute for Medical Education** (IME) for making this opportunity available and congratulating the individuals listed below.

**Debora Afezoli, MD**

Mount Sinai Hospital Geriatrics and Palliative Medicine

**Naman Barman, MD**

Mount Sinai Hospital Internal Medicine

**Benjamin Bier, MD,**

Mount Sinai Hospital Cardiology

**Benjamin Brush, MD**

Mount Sinai Hospital Neurology

**Prapti Chatterjee-Murphy, MD**

Mount Sinai Hospital Internal Medicine

**Angela Condo, MD**

Mount Sinai Hospital Geriatrics and Palliative Medicine

**Kelly Cummings, MD**

Mount Sinai Hospital Geriatrics and Palliative Medicine

**Yakira David, MD (IME Scholarship)**

Mount Sinai Hospital, Gastroenterology

**Megha George, MD (Faculty)**

Mount Sinai Hospital Emergency Medicine

**Christina Hajicharalambous, MD (Faculty)**

Mount Sinai Hospital EmergencyMedicine

**Benjamin Hyers, MD**

Mount Sinai Hospital Anesthesiology

**Cassandra Koid Jia Shin, MB, BCh, BAOP**

NYC Health+Hospitals Elmhurst Pediatrics

**Yaowaree Leavell, MD**

Mount Sinai Hospital Neurology

**Scott Leikin, DO**

Mount Sinai Hospital Critical Care Medicine

**Ananya Manchikalapati, MBBS**

NYC Health+Hospitals Elmhurst Pediatrics

**Jamie Nichols, MD**

Mount Sinai Hospital Neurology

**Vijay Palvia, MD**

Mount Sinai Hospital MinimallyInvasive Gynecologic Surgery

**Caroline Park, MD, PHD**

Mount Sinai Beth Israel Internal Medicine

**Paul Peng, MD, PHD**

Mount Sinai Hospital Emergency Medicine

**Adam Russak, MD**

Mount Sinai Hospital Internal Medicine

**Bertin Salguero, MD**

Mount Sinai St. Luke's and West Internal Medicine

**Monica Sethi, MD**

Mount Sinai Hospital Emergency Medicine

**Ronak Shah, MD**

Mount Sinai Hospital Anesthesiology Health Care Simulation

**Sonali Tatapudy, MD**

Mount Sinai Hospital Pediatrics

**Kevin Wang, MD (IME Scholarship)**

Mount Sinai Hospital Orthopaedic Surgery

**Mitchell Wice, MD**

Mount Sinai Hospital Geriatrics and Palliative Medicine

**Adina Wise, MD**

Mount Sinai Beth Israel Neurology

## GME WELL-BEING CHAMPIONS



**Saadia Akhtar MD**  
Associate Dean for Trainee Well-Being and Resilience in Graduate Medical Education



**Sakshi Dua, MD**  
Director, GME Well-Being Champions Program

In October a third cohort of faculty were appointed to the [GME Well-Being Champions Program](#), and as part of this will be engaged in a program focused on promoting a culture of well-being within a given residency or fellowship program(s). In order to ensure that wellness is not forgotten among the many competing priorities in academic medicine, the GME Well-Being Champions work to incorporate wellness into the daily operations of the program in both the curricular and extracurricular domains. Please join us in recognizing the individuals below who have committed themselves to this important work.



**Krishna Chokshi, MD**  
Mount Sinai Hospital Internal Medicine



**Christie Mulholland, MD**  
Mount Sinai Hospital Geriatrics and Palliative Medicine



**Meenkashi Gupta, MD**  
New York Eye and Ear Infirmary of Mount Sinai Ophthalmology



**Scott Nowakowski, MD**  
Mount Sinai Hospital Radiology



**Manassa Hany, MD**  
Mount Sinai St. Luke's and West Psychiatry



**Kamron Pourmand, MD**  
Mount Sinai Hospital Transplant Hepatology.



**Christopher Kellner, MD**  
Mount Sinai Hospital Neurological Surgery



**Maria Ronquillo, MD**  
Mount Sinai Hospital Critical Care Medicine



**Lauren Maramara, MD**  
Mount Sinai St. Luke's and West Obstetrics and Gynecology



**Abdelsalam Sharabi, MD**  
Mount Sinai St. Luke's and West Pathology



**Michelle Marin, MD**  
Mount Sinai Hospital Emergency Medicine



**Matthew Swan, MD**  
Mount Sinai Beth Israel Neurology



Engaging faculty in collaboratively addressing the well-being of our residents and fellows



## GME EDUCATIONAL CONFERENCE

On October 23 over 230 faculty from across ISMMS and the larger GME Consortium participated in the **4th Annual GME Educational Conference** at Mount Sinai corporate headquarters on 42nd Street. The theme of this year's conference was **Diversity, Equity and Inclusion: Fostering Innovation in GME** and included key notes from **Quinn Capers, IV, MD, FACC**, Dean for Faculty Affairs at The Ohio State University School of Medicine ("The Lack of Diversity in Medicine is a National Emergency: The Way Forward") and **Elizabeth Howell, MD, MPP**, Associate Dean for Academic Development and Vice Chair of Research, Obstetrics and Gynecology, Icahn School of Medicine at Mount Sinai ("The Overlap Between Health Equity and Quality Care: The Case of Maternal Mortality"). Faculty had the opportunity to also engage in a variety of smaller workshop sessions on topics such as **Giving Effective Feedback; Academic Promotions; Resident Mistreatment; Mentoring and Sponsorship in the #HeForShe #MeToo Era; and Tools for Improving Clinical Teaching**. A **New Program Director Workshop** was also offered for new and emerging program directors.



## GME COORDINATOR/ADMINISTRATOR CONFERENCE

On October 3 nearly 100 program coordinators and administrators from across ISMMS and the larger GME Consortium participated in the **GME Coordinator/Administrator Conference** at Mount Sinai corporate headquarters on 42nd Street. The conference included sessions on **Recruitment Best Practices and Post-Match Analysis; Supporting International Medical Graduates in Training; Navigating Beyond Conflict; Projecting the Coordinator Role; and Lean Training**.





## Office of Graduate Medical Education

### **I. Michael Leitman, MD, FACS**

Dean for Graduate Medical Education  
Designated Institutional Official

### **Michael R. Berman, MD, MBI**

Associate Dean for Quality and Patient Safety in Graduate  
Medical Education

### **Frank Basloe**

Assistant Dean for Graduate Medical Education

### **Gaber Badran**

GME Senior Systems Software Specialist

### **Angelic Cotto**

House Staff Affairs Administrator, Surgical

### **Pascal Ferreira**

GME Administrator

### **Judy Irons**

House Staff Affairs Administrator, Medical  
Specialties/Internal Medicine

### **Muhammad Khalid**

GME Administrator, Well-Being and CLER

### **Beverley Ramdeen**

House Staff Affairs Administrator, Medical Specialties/Other

### **Shou-Su Yu**

House Staff Systems Administrator

### **Saadia Akhtar, MD**

Associate Dean for Trainee Well-Being and Resilience in  
Graduate Medical Education

### **Brijen J. Shah, MD**

Associate Dean for Quality and Patient Safety In Graduate  
Medical Education

### **Cheryl Spence, LCSW**

Director of Operations

### **John Battis**

GME Administrator, Medical Specialties/Other

### **Kate Eisenberg**

GME Administrator, Medical Specialties/Internal Medicine

### **Merdena Harrell**

Sr. House Staff Affairs Administrator, Hospital-Based

### **Tara Jefferson**

GME Project Administrator

### **Celicia Montgomery**

GME Administrator, Hospital-Based

### **Jacinta Russell**

GME Administrator, Surgical

**The Office of Graduate Medical Education (GME) ensures a superior and supportive education environment by advocating for and providing expertise and resources to our trainees and programs. Through innovative approaches to education, research, and patient care, we produce leaders who will thrive in their careers as physicians and scientists so they can meet the changing needs of our society.**